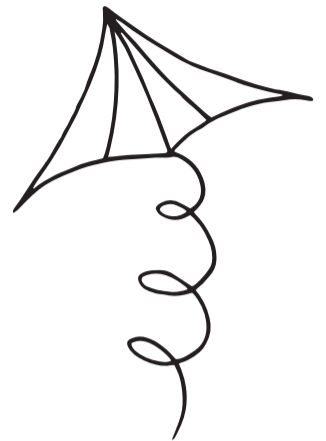


KITES RESTAURANT

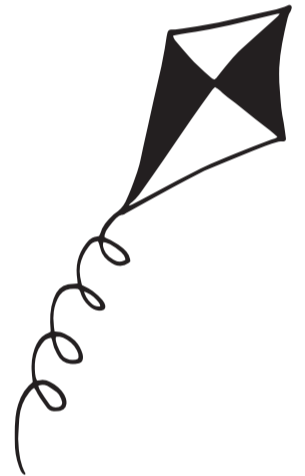
DESSERT

STRAWBERRY MASCARPONE	12
FLOURLESS CHOCOLATE CAKE GF	12
raspberry sauce, whipped cream	
RICOTTA PISTACHIO CAKE	12
WARM CARAMEL APPLE BLOSSOM	12
vanilla ice cream, chocolate curls	
BANANA SPLIT	12
chocolate, strawberry + vanilla ice cream, pineapple, peanuts, whipped cream, cherries	
ICE CREAM + WHIPPED CREAM	5
1 scoop of vanilla, chocolate or strawberry	



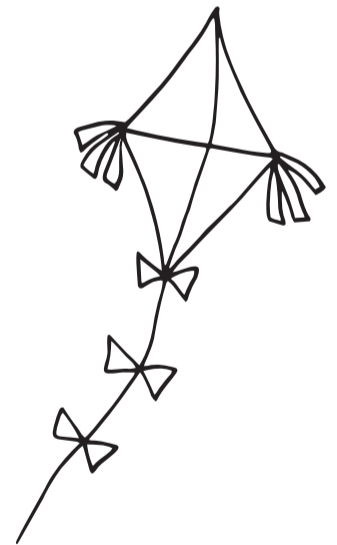
MILK SHAKES

CHOCOHOLIC	10	STRAWBERRY	10
VANILLA	10	SALTED CARAMEL	10



COFFEE

KIMBO COFFEE: IL CAFE DE NAPOLI 5 [REGULAR OR DECAF]			
The typical Italian roast gives this blend a perfect balance between sweetness and intensity.			
ESPRESSO	6	AMERICANO	5
DOUBLE ESPRESSO	8	MOCHA	7
CAPPUCCINO	8	HOT CHOCOLATE	5
CAFE LATTE	7	ICED COFFEE	7



COFFEE COCKTAILS

CAFE AFFOGATO	18
espresso johnnie walker black, vanilla gelato	
SPANISH COFFEE	18
coffee, tia maria, whipped cream	
FRENCH CONNECTION	18
coffee, amaretto, cognac, whipped cream	
NUTTY IRISH	18
frangelico, irish whiskey, whipped cream	



RISHI TEA

EARL GREY	5
Organic Earl Grey combines robust and fruity Thai black tea with mellow, caramel sweet Yunnan Dian Hong. This original blend perfectly complements the floral high notes of geranium and rose found in our first-pressing bergamot essential oil.	
JADE CLOUD	5
Jade Cloud is a lively green tea that we created over a decade ago in collaboration with artisans at the Xuan En Organic Yisheng Tea Cooperative in the remote mountains of Hubei province.	
CHAMOMILE MEDLEY	5
Our signature chamomile blend highlights golden Croatian chamomile blossoms that are masterfully paired with soothing herbal counterpoints of lemon verbena, lemongrass & spearmint.	
MASALA CHAI	5
Classic style of black tea blended with traditional spices native to South & Southeast Asia. The tea base consists of a robust and malty assam balanced.	
ENGLISH BREAKFAST	5
Highlights teas from Southeast Asia to produce Rishi's signature profile blend. The origins will vary from time to time, but the blend is always honed to brew consistently.	
PEPPERMINT	5
Our pure peppermint leaves hail from the Pacific Northwest, where certain cultivars are prized as some of the most aromatic and potent in the world. We seek a specific strain of <i>Mentha x piperita</i> that offers a bright candy cane flavor.	

BRANDY + CORDIALS

COURVOISIER VS	22
HENNESSY VS	17
AMARETTO DISARONNO	14
BAILEYS	14
BENEDICTINE	12
CHAMBORD	13
DRAMBUIE	15
FRANGELICO	12
KAHLUA	12
SAMBUCA	12
TIA MARIA	12

IRISH WHISKEY

JAMESON	14
---------------	----

RYE

SAGAMORE, MARYLAND	14
--------------------------	----

BOURBON

BOOKER'S BOURBON SMALL BATCH	32
FOUR ROSES SMALL BATCH	13
KENTUCKY BOURBON WHISKEY	15
KNOB CREEK SMALL BATCH	14
MAKER'S MARK BOURBON	13

PORT

FONESCA PORTO BIN 27	11
----------------------------	----

SCOTCH

ABERLOUR 12 YEAR, SCOTLAND, SPEYSIDE	16
GLENFIDDICH 12 YEAR SIGNATURE, SCOTLAND, SPEYSIDE	19
GLENFIDDICH 15 YEAR UNIQUE SOLERA, SCOTLAND, SPEYSIDE	30
GLENLIVET 12 YEAR, SCOTLAND, SPEYSIDE	15
GLENLIVET 14 YEAR, SCOTLAND, SPEYSIDE	24
JOHNNIE WALKER BLACK 12 YEAR, SCOTLAND	15
JOHNNIE WALKER BLUE, SCOTLAND	84
MACALLAN 12 YEAR, SCOTLAND, SPEYSIDE	28

